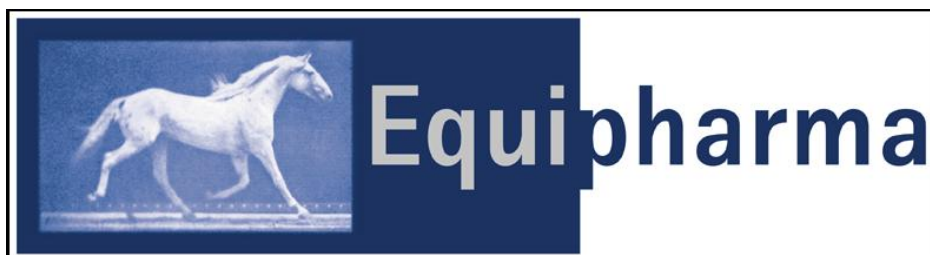




**If you ask the opinion of a real professional!**



# Info and orders

## ECUPHAR NV division Equipharma

Legeweg 157-I  
BE-8020 Oostkamp  
Tel.: +32/50/31.42.69  
Fax: +32/50/31.44.17

Pharm. John Hawkins - Mobile +32(0)475 810 365

Katilyne Ghijselings, DVM - Mobile +32(0)490 119 153

[www.equipharma.com](http://www.equipharma.com)

[Info@equipharma.com](mailto:Info@equipharma.com)

[Info@equi-support.com](mailto:Info@equi-support.com)

Equi-Support



[orthopaedics.be](http://orthopaedics.be)

Equipharma

This information was written by and meant for people dealing professionally with health and food. It is not meant for laypeople / consumers. Making a diagnosis and proposing a suitable treatment belongs to the tasks of a professional.

Dietary supplements for sport horses (not for horses for human consumption) are no substitute for varied diet.



## **CORPORATE PHILOSOPHY OF EQUIPHARMA**

### **Equipharma, a division of Ecuphar in cooperation with Veterinary Surgeons.**

In the past decades nutrition specialists have made progress with research into bioactive substances. Bioactive substances are mainly of vegetable origin (vegetables and fruit, herbs, grains); research shows that separate nutrients can improve cell-to-cell communication, repair DNA damage, eliminate toxins, have anti-oxidative effects and stimulate the immune system.

One of our tasks is **Research and Development** and to formulate new / better products which contain all essential building blocks. We will see to it that everything is done in a scientifically validated way. This means that only natural and standardized products are being used and only substances which have proved to be useful in a certain indication.

**Equipharma** takes customer satisfaction very seriously.

We intend to offer:

- high-quality components and analysis certificates
- good service before and after
- excellent know-how

**Equipharma's** products security guaranteed:

- HACCP: Hazard Analysis Critical Control Point
- GMP: Good Manufacturing Practices
- ISO 9001
- Doping Control made by LCH Laboratoires<sup>1</sup>

---

<sup>1</sup> Laboratoires des Courses Hippiques, 10, Boulevard Malherbes, 75008 Paris

# UK catalogue



## **Complementary feeding stuff for horses**

BIOTIN FORTE 1 kg

ECUCHOL 5 L

Equi-ATP 1 kg

Equi-BCAA 1 kg

Equipharma-BREEDING 3 kg

Equi-COMPETITION 12 x 40 g

Equi-DIGEST 1 kg

Equi-DOLAN 1 kg

EQUIVIT DRY 10 kg

Equi-ELEKTROLYTE 1 kg

Equi-JOINT 1 kg

Equi-JOINT 5 kg

Equi-MSM 1 kg

Equi-MUSCLE 1 kg

Equi-MUSCLE FORTE 1 kg

Equi-RESISTANCE 1 kg

Equi-SELES 1 kg

Equi-SPERFOR PLUS 1.2 kg

Equi-STRESS 1 kg

Equi-TOTAL 1 kg

Equi-VITAMINE E 300 g

FERROTONIC HORSE 2kg

HIPPOSPIROS LIQUID 500 ml

HEPAPROTECT 1000 g

HIPPO-11 600 g



HYPAMINON ACTIVE 500 g

PLACENTAROM 100 ml

PULVIREX 10 ml

Complementary feedingstuff for horses	Package	Recommended Daily Allowance	Indications
<b>BIOTIN FORTE</b>	Powder 1 kg	1 x per day 1 measuring spoon (25g)	Nourishes and protects skin and hoofs
<b>ECUCHOL</b>	Liquid 5 L	50 ml per day	For a better liver function and metabolism. Nourishes and protect the coat.
<b>EQUI-ATP</b>	Powder 1 kg	2 x per day 1 measuring spoon (22g)	Advisable for sport horses. (1 week before competition, during and 2 days after competition)
<b>EQUI-BCAA</b>	Powder 1 kg	2 x per day 1 measuring spoon (15 g)	Muscle relaxation after strenuous effort.
<b>EQUIPHARMA BREEDING</b>	Powder 3 kg		For a comfortable pregnancy and idea for growing up.
<b>EQUI-COMPETITION</b>	Sachets 12 x 40g	1 sachet 2 days before, during and 2 days after competition	More energy, quick lactic elimination.
<b>EQUI-DIGEST</b>	Powder 1 kg	1 to 2 x per day 2 measuring spoons (20 g)	For a better digestion.
<b>EQUIVIT DRY</b>	Powder 10 kg	1 x per day 2 measuring spoons. Foals 1 scoop a day	Vitamins and Minerals for ideal growth for foals and comfortable pregnancy.
<b>EQUI-DOLAN</b>	Powder 1 kg	1 x per day 1 measuring spoon (22 g)	In periods of overburden.
<b>EQUI-ELEKTROLYTE</b>	Powder 1 kg	1 x per day 1 measuring spoon (28 g)	Recovery after strenuous exercise.
<b>EQUI-JOINT</b>	Powder 1 kg / 5 kg	1 x per day 1 measuring spoon (27 g)	Helps in the maintenance of supple joints.
<b>EQUI-MSM</b>	Powder 1 kg	1 x per day 1 measuring spoon (23 g)	Nourishes and protects skin and hoofs.

<b>EQUI-MUSCLE</b>	Powder 1 kg	3 x per day 1 measuring spoon (12 g)	Supports the muscle function.
<b>EQUI-MUSCLE FORTE</b>	Powder 1 kg	3 x per day 1 measuring spoon (12 g)	Supports the muscle function.
<b>EQUI-RESISTANCE</b>	Powder 1 kg	1 x per day 1 measuring spoon (22 g) Do not give longer than 3 weeks.	Stimulates the immune system.
<b>EQUI-SELES</b>	Powder 1 kg	1 x per day 1 measuring spoon (60 g)	Vitamin E and Selenium.
<b>EQUI-SPERFOR PLUS</b>	Powder 1.2 kg	2 x per day 1 measuring spoon (30g)	Supplies more energy, better performance, increase resistance and improves motility
<b>EQUI-STRESS</b>	Powder 1 kg	1 x per day 1 measuring spoon (25 g)	To use in case of stress factors.
<b>EQUI-TOTAL</b>	Powder 1 kg	1 x per day 1 measuring spoon (17 g)	Additional minerals, vitamins and amino acids.
<b>EQUI-VITAMINE E</b>	Powder 300 g	1 x per day 1 measuring spoon (10 g)	Pure Vitamin E (500 mg/g).
<b>FERROTONIC HORSE</b>	Powder 2 kg	1x per day 1 measuring spoon (25g)	Iron supply
<b>HEPAPROTECT</b>	Pellets 1kg	1 x per day 1-2 measuring spoons (35g)	Chronic liver deficiency. For a better liver function.
<b>HIPPOSPIROS LIQUID</b>	Liquid 500 ml	1 x per day 2 measuring spoons	For sensitive airways, for better breathing.
<b>HIPPO-11 PELLETS</b>	Pellets 600 g	1 x per day 1-2 measuring spoons (25g)	Rich in Methylcystein Mucolitic. For a better breathing and oxygen uptake.
<b>HYPAMINON ACTIVE</b>	Powder 500 g	1 x per day 1 measuring spoon (12,5 g) for 500 kg	Hemoglobin-protein/ Iron supply

<b>PLACENTAROM</b>	Liquid 100 ml	Mares 20 ml per day during 5 days Or 1 x 100 ml in Situ into matrix post partum.	Helps the natural resistance post-partum
<b>PULVIREX</b>	Box of 20 syringes of 10 ml	10ml daily in food	For optimal breathing.



# Biotin Forte



## Composition (Quantité per kg)

Complementary feedingstuff for horses .

Calcium carbonate / Mono calcium phosphate / Sodium chloride, Toasted Soya beans .

<b>Vitamines</b>	
Vitamin A	500.000 IE/UI
Vitamin D3	66.750 IE/UI
Vitamin E	2.000 mg
Vitamin K3	100 mg
Vitamine B1	67 mg
Vitamin B2	234 mg
Vitamin B5	666 mg
Vitamin B6	167 mg
Vitamin B9	167 mg
Vitamin B12	1 mg
Vitamin PP	1.166 mg
Biotin	2.015 mg
Cholin	7.500 mg
<b>Amino acids</b>	
DL-Methionin	200.000 mg
<b>Oligo-elements</b>	
Fe: Chelated Fe from glycin hydrate – E1	600 mg
Cu: Chelated Cu from glycin hydrate – E4	120 mg
Zn: Chelated Zn from glycin hydrate – E6	750 mg
Mn: Chelated Mn from glycin hydrat – E5	600 mg
Jodium (Anhydric Ca salt) – E2	21,11 mg
Co: Carbonateof Co monohydrate – E3	16,75 mg
Se: Sodium selenit – E8	6,67 mg
Se: Seleniummethionin – 3b8.11	3,33 mg

Package : 1 kg with scoop (25 g)  
Dosage : Mixed with the feed.  
1 scoop a day during 6 month.

Precaution: Nonre

Conservation : Room temperature (25°C) : 9 months.

**Nourishes and protects skin and hoofs**

# Ecuchol

## Composition (Quantity per kg)

Complementary feedingstuff for horses.

Sorbitol, Water



Amino acids	
Methionine / Méthionine	0,87%
Vitamines	
Choline	178.000 mg

Package : 5 liter, 500 ml, 125 ml container.

Dosage : Trough drinking water or in feed during 10 days.  
Renew the solution daily.  
50 ml per day .

Precaution : None

Conservation : 5 years if stored dry and at room temperature..

**For a better liver function and metabolism.  
Nourishes and protect the coat**



## Equi-ATP

Gives more energy and supple muscles.

### Composition (Quantity per kg)

Feedingstuff	
Dextrose	
D-Ribose	100 g
Aesculus hippocastanum (Horse chestnut)	30 g
Sorbus aucuparia (Rowantree)	30 g
Vitamins	
Vitamin B1	38.100 mg
Vitamin B2	665 mg
Vitamin B3	2.500 mg
Vitamin B5	890 mg
Vitamin B6	3.140 mg
Vitamin B12	0,22 mg
Vitamin E (D-alpha-tocopherol)	41.120 mg
Vitamin C	75.000 mg

Package : 1 kg with apple flavour  
Dosage : 2 measuring spoons (22 g) per day or as recommended  
Precaution : No specific indications

### Properties

Cells obtain energy from breaking down glucose in the mitochondria. Converting glucose is a complicated process during which dozens of enzymes are needed, including acetyl coenzyme A. To store energy temporarily and to transport it, energy is put in a molecule called Adenosine triphosphate. Strenuous efforts require quick energy which is generated in an anaerobic way, i.e. without oxygen. A shortage of Adenosine triphosphate results in producing lactic acids. And as we know lactic acids cause tiredness / stiffness and cramp.



## Equi-BCAA

Muscle relaxation after strenuous effort.

### Composition (Quantity per kg)

Amino acids	
L-leucine	344.000 mg
L-isoleucine	254.000 mg
L-valine	254.000 mg
Vitamins and pro-vitamins	
Vitamin B6	500 mg
L-Carnitine	14.460 mg

Package : 1 kg with apple flavour  
Dosage : 1 measuring spoon (15 g) per day or as recommended  
Precaution : No specific indications

### Properties

BCAA is short for Branched Chain Amino Acids; BCAA's include leucine, isoleucine and valine. BCAAs stimulate the protein synthesis and suppress muscle protein breakdown. They serve as an important energy source in case of lack of glucose. In other words, BCAA's are considered suitable for strength and endurance sports. L-carnitine is an amino acid which stimulates energy production. The substance is made in the body from the amino acids lysine and methionine. Carnitine is needed for the transport of free fatty acids into the mitochondrial matrix and provides energy to cells where fats are converted to an energy source (liver / heart / muscles /...). Muscles contain the highest carnitine levels.  
Recommended after strenuous exertions.



## Equipharma-BREEDING

All vitamins, minerals, proteins, fatty acids for the successful development of the joints of foals and mares during pregnancy and lactation

### Composition (Quantity per kg)

<b>Feedingstuff</b>	
Ca Carbonat	180 g
Whey proteins	100 g
Mono calcium Phosphat	90 g
Omega-3 Fatty acids (EPA 33% / DOCA 22%)	60 g
Glucosamine Sulfate	40 g
MSM	40 g
Magnesium stearate	20 g
Chondroitin 90% sulfate	9 g
<b>Amino acids</b>	
L-Tryptophan	2 %
<b>Vitamins</b>	
Vit.A Retinol	200.000 I.E.
Vit D3 Cholecalcipherol	60.000 I.E.
Vit.K3 Menadion	100 mg
Vit B1 Thiamin	1.000 mg
Vit B2 Riboflavin	1.000 mg
Vit B5 Ca-D-Panthonat	1.000 mg
Vit B6 Pyridoxin	400 mg
Vit B9 Folic Acid	100 mg
Vit B12 Cyanocobalamin	2 mg
Vit C ascorbic acid	1.200 mg
Vit PP Nicotinamid	400 mg
Vit H Biotin	20 mg
Vit E d-alphatocopherol	4.000 mg
Cholin	3.000 mg
Inositol	3.000 mg

<b>Minerals</b>	
Fe Iron chelate 20%	3.000 mg
Cu Copper Chelate 10%	2.000 mg
Zn Zinc chelate 15%	3.000 mg
Mn Manganese chelate 15%	2.000 mg
Potassium 1%	0,026 mg

Packing: 3 kg with a measure of 30g, banana flavour

Dosage :

**Foals :**

- up till 6 months a ½ measurement a day .
- from 6 months 1 measurement a day.

**Mares :**

- during the last 3 months of pregnancy 1 measurement a day
- during lactation period 1 measurement a day.

**Sport horses:** 2 measurements a day

Précaution: None

## Properties

**Equipharma-Breeding** contains 32 essential ingredients for growth, pregnancy and revitalization.

It contains vitamins, minerals, proteins, omega 3 fatty acids and all the ingredients necessary for proper development of cartilage.

- For growing foals
- For mares during pregnancy and lactation
- For sport horses



- Improves immunity and protects cells by omega-3 fatty acids
- A good balance of glucosamine-chondroitin improves bone growth.
- Glucosamine Sulfate and chondroitin strenghten muscles and tendons.
- Magnesium ,L-Tryptophan and Vitamin B improve the central nerve system.
- Contains the vital elelments necessary for optimal enzyme function.
- Inositol en Cholin support the metabolism.
- Vitamin C and vitamin E are strong antioxidants.

# Equi-COMPETITION

More energy, quick lactic elimination.

## Composition (Quantity per sachet)

<b>Feedingstuff</b>	
Ribose	
Boswellia serrata (Incence)	5 g
Filipendula ulmaria (Meadowsweet)	4 g
Lepidium meyenii (maca)	3 g
Dextrose	
Aesculus hippocastanum (Horse chestnut)	2,5 g
Ribes nigrum (Black currant)	1 g
<b>Vitamins and pro vitamins</b>	
Vitamin B1	500 mg
Vitamin B2	35,2 mg
Vitamin B3	50 mg
Vitamin B5	35,2 mg
Vitamin B6	100 mg
Vitamin B12	100 mg
Vitamin C	3.000 mg
Vitamin E ( D-alpha-tocopherol)	1.500 mg
Inositol	500 mg
Choline	600 mg
<b>Amino acids</b>	
L-leucine	3000 mg
L-isoleucine	2000 mg
L-carnitine	600 mg
L-valine	500 mg
L-arginine	300 mg
L-tryptophan	300 mg

Package : 12 sachets of 40 g with apple flavour  
Dosage : 1 sachet per day two days before, during and two days after competition  
Precaution : No specific indications



## Properties

**Equi-Competition** provides energy in case of fatigue and enables a rapid recuperation after strenuous efforts.

**Equi-Competition** is a formula with anti-stress properties, especially designed to keep the joints and muscles supple and to optimize the physical capacities.

**Equi-Competition** contains all necessary substances for the energy production and to avoid the formation of lactic acids.



# Equi-DIGEST

For a better digestion.

## Composition (Quantity per kg)

<b>Feedingstuff</b>	
Dextrose	
Matricharia chamomilla (German chamomile)	75 g
Glycyrrhiza glabra (Licorice)	75 g
Vaccinium macrocarpon (Cranberry)	50 g
Spirulina platensis (Blue-green algae)	23 g
Curcuma longa (Turmeric)	20 g
Calcium D-glucarate	16,5 g
MSM	5,3 g
<b>Vitamins and pro-vitamins</b>	
Vitamin A	10.000 IU
Vitamin B1	30 mg
Vitamin B3	1.300 mg
Vitamin B5	300 mg
Vitamin B6	70 mg
Biotin	20 mg
Vitamin C	1.700 mg
Vitamin E (d-alpha tocopherol)	155 mg
<b>Amino acids</b>	
L-glycine	800 mg
L-glutaminic acid	800 mg
L-cystein	800 mg
<b>Minerals</b>	
Manganese AA chelate 10%	40 mg
Zinc arginine 15%	30 mg

Package : 1 kg with apple flavour  
Dosage : 2 measuring spoons (20 g) per day or as recommended  
Precaution : No specific indications

## Properties

The goal of **Equi-Digest** is to :

- stimulate the digestion
- strengthen the intestinal flora
- stimulate the intestinal activity

The role of the intestinal mucosa is twofold: absorbing foods and being a barrier against invaders. That is exactly why the integrity of the intestinal mucosa is of crucial importance. If one of the tasks of the intestinal mucosa can no longer be fulfilled, numerous problems may arise.

A great number of vitamins and minerals have an important job to fulfil in the purification (most effective is **vitamin E**) and serve as precursor for certain enzymes in the detoxification process.

An important detoxification mechanism for carcinogens is glucuronidation. This mechanism is activated by glucuronyl-transferase which is mainly made up of **calcium-D-glucarate**.

Another detoxification pathway is glutathione conjugation. The tripeptid **glutathione** is made up of **cystein** and two more amino acids **glycine** and **glutamine**.

**Spirulina** is a rich source of easily digestible proteins and contains a great amount of chlorophyll which is fundamental in the production process of cytochrome. Cytochrome plays an essential role in converting fat-soluble toxins into water-soluble molecules (cyto P450).

The intestinal flora helps to regulate the pH value in the digestive system. A number of vitamins can be produced by the intestinal flora themselves, such as vitamin K and some B vitamins. They feed on fibres (Curcuma root) which influence peristaltic movement.

Healthy gut cells produce mucus and bicarbonate which protect the intestines against damage by toxins. Glutamine serves as an important source of energy for the large intestine.

**Hydrastis canadensis** and **Curcuma longa** heighten immunity and stimulate and restore the function of the intestinal mucosa.

**Glycyrrhiza glabra** or Liquorice and **Matricharia chamomilla** or Chamomile have also a positive effect on the function of stomach and digestion.

All substances which have a positive effect on the integrity of the intestinal barrier are present.



# Equivit Dry

## Composition (Quantity per kg)

Calcium carbonate / Monocalciumfosfate /, Sodium chloride, Toasted soya beans.

<b>Vitamines</b>	
Retinol (Vit A)	750.750 IE
Cholecalciferol (Vit D3)	100.050 IE
D-alpha tocoferol (Vit E)	3.000 mg
Menadion / (Vit K3)	150 mg
Thiamin (Vit B1)	100 mg
Riboflavin (Vit B2)	350 mg
Calcium-D-pantothenate	1.000 mg
Nicotinamide (Vit PP)	1.752 mg
Pyridoxine (Vit B6)	250 mg
Folic acid	250 mg
Cyanocobalamin (Vit B12)	2 mg
Biotin	25 mg
Cholin	12.500 mg
<b>Oligo-minerals</b>	
Fe Iron chelate– E1	1.500 mg
Fe Iron chelate of glycine hydrate – E1	950 mg
Cu Kopper chelate – E4	315 mg
Zn Zinc monohydric sulfate – E6	1.750 mg
Zn Zinc chelate of glycine hydrate – E6	1.100 mg
Mn Manganese oxid – E5	1.500 mg
Mn Manganese chelate of glycine hydrate– E5	1.050 mg
I Anhydric Calcium iodate – E2	31,66 mg
Co (basic monohydrate Co carbonate) – E3	25,13 mg
Se (sodium selenite) – E8	10,01 mg

Se (selenomethionine) – 3b8.11	5 mg
<b>Amino acids</b>	
L-tryptophane	4.250.000 mg

Package :: 10 kg container with scoop.

Dosage :  
- sporthorses : 2 scoops a day  
- foals : 1 scoop a day  
- mares during pregnancy and lactation : 2 scoops a day during 3 months

Precaution : None

Conservation : Room temperature (25°C). 1 year.

**Vitamins and Minerals for ideal growth for foals and comfortable pregnancy**



# Equi-DOLAN

In periods of overburden.

## Composition (Quantity per kg)

Feedingstuff	
Boswellia serrata (Incence)	300 g
MSM	200 g
Filipendula ulmaria (Meadowsweet)	150 g
Aesculus hippocastanum (Horse chestnut)	50 g
Ribes nigrum (Black currant)	50 g
Viola tricolour (Wild pansy)	25 g
Origanum vulgare (Wild marjoram)	25 g

Package : 1 kg with apple flavour  
Dosage : 1 measuring spoon (21 g) per day or as recommended  
Precaution : No specific indications

## Properties

A combination of plants known for their powerful anti-oxidative properties.

**Boswellia serrata** is an Indian plant of which the resin is used. This resin consists of essential oils, gum and terpenoids. The terpenoids contain the Boswellia-acids which seem to be the active substances. This plant takes care of the relieve of the locomotor system and can be perfectly combined with glucosamine (**Equi-Joint**).

**Ribes nigrum**, better known as cassis, has mainly a large supply of vitamin C and has a strong influence on stamina and fatigue.

**Origanum vulgare** is an important essential oil.

**Viola tricolor** contains large quantities of flavonoids with a membrane stabilizing activity.

**Spirea or Filipendula ulmaria** contains salicoside and salicortine.

**Aesculus** stimulates blood circulation.



<b>Equi-ELEKTROLYTE</b>	Recovery after strenuous exercise.
-------------------------	------------------------------------

## Composition (Quantity per kg)

<b>Feedingstuff</b>	
Glucose	
Sodium chloride	
Potassium chloride	
Calcium carbonate	
Sodium bicarbonate	
Magnesium sulphate	
<b>Vitamins and pro-vitamins</b>	
Vitamin E (d-alpha-tocopherol)	20.000 mg
Vitamin C	15.000 mg
<b>Amino acids</b>	
L-Methionine	5.000 mg

Package : 1 kg with apple flavour  
 Dosage : 1 measuring spoon (28 g) per day or as recommended  
 Precautions : No specific indications



## Properties

Horses cool down through sweat (thermoregulation). Sweating means losing fluids but also essential electrolytes (sodium / potassium chlorid). Low electrolyte levels can lead to poor performance.

How many electrolytes horses lose depends largely on the exercise and other factors such as weather conditions. For this reason it is recommended to give electrolytes on a regular basis after strenuous exertions.

This way lost electrolytes can be replenished and water consumption stimulated



## Equi-JOINT



Helps in the maintenance of flexible joints.

### Composition (Quantity per kg)

Feedingstuff	
Glucosamine sulphate 90%	300 g
MSM	300 g
Collagen type II	209 g
Chondroitine sulphate 90%	72 g
Vitamins	
Vitamin C	30.000 mg
Vitamin E (D-alpha-tocopherol)	4.635 mg
Minerals	
Zinc chelate 15%	4.500 mg

Package : 1 kg / 5 kg with vanilla flavour  
Dosage : 1 measuring spoon (27 g) per day or as recommended  
Precaution : No specific indications

### Properties

The combination of **chondroitine sulphate / glucosamine sulphate / collagen type II / MSM / zinc chelate / vitamin C / vitamin E** is strongly recommended for cartilage regeneration and the production of synovial fluid. The substances with a major chondroprotective effect are **glucosamine and chondroitine**. Chondroitine sulphate is a range of glucosamine sulphate compounds and is considered essential to cartilage / ligaments and repairs the intestinal mucosa. In contrast with chondroitine, glucosamine is a simple molecule which can be absorbed easily. Together they support one another.

Attention should be drawn to the fact that glucosamine sulphate – and not the HCl form – is the natural building block for all natural compounds including cartilage. Glucosamine sulphate can be absorbed up to 4 times better than the HCl form.

**Collagen type II** is fundamental building support for joints, cartilage and tendons.

**MSM or Methyl Sulphonyl Methane** is a biologically active sulphur component which helps to keep the membranes supple and permeable and which serves as building material for the production of collagen.

**Vitamin C and E** are two vitamins which can stop the harm done by free radicals.

**Equi-Joint** helps to meet the higher needs of nutrients for the locomotor system during times of strain and during the growth phase.

**Equi-Joint** can easily be combined with other products. In an acute phase a combination of **Equi-Joint** and **Equi-Dolan** is recommended.



## Equi-MSM

Nourishes and protects skin and hoofs.

### Composition (Quantity per kg)

#### Feedingstuff

Methyl sulphonyl methane

1000 g

Package : 1 kg  
Dosage : 1 measuring spoon (23 g) per day or as recommended  
Precaution : No specific indications

### Properties

**MSM (= Methyl Sulphonyl Methane)** is an organic source of sulphur which helps keeping the membranes supple and permeable and which serves as building material for the production of proteins and collagen. It is an odourless, water soluble, stable, white, crystalline powder. MSM is naturally present in the body's fluids and tissues, but also in milk / fruit / grain / vegetables (small amounts).

**Equi-MSM** can easily be combined with other products.



# Equi-MUSCLE

Supports the muscle function.

## Composition (Quantity per kg)

Feedingstuff	
Whey proteins	934,8 g
Vitamins	
Vitamin A	400.000 IU
Vitamin E (d-alpha tocopherol)	206 mg

Package : 1 kg with apple flavour  
Dosage : 1 measuring spoon (12 g) 3 times per day or as recommended  
Precaution: No specific indications

## Properties

Proteins consist of amino acids and are considered the body's building blocks for muscular tissue. Hence the importance of the supply of amino acids.



## Equi-MUSCLE FORTE

Supports the muscle function.

### Composition (Quantity per kg)

Feedingstuff	
Whey protein	708,8 g
Tribulus terrestris (Devil's thorn)	250 g
Vitamins	
Vitamin A	400.000 IU
Vitamin E (d-alpha tocopherol)	200 mg

Package : 1 kg with apple flavour  
Dosage : 1 measuring spoon (12 g) 3 times per day or as recommended  
Precaution : No specific indications

### Properties

Proteins consist of amino acids and are considered the body's building blocks for muscular tissue. Hence the importance of the supply of amino acids.  
**Tribulus terrestris** has positive effects on the male characteristics, namely sports performances and muscular metabolism,...



## Equi-RESISTANCE

Stimulates the immune system.

### Composition (Quantity per kg)

Feedingstuff	
Dextrose	600 g
Spirulina platensis (Blue-green algae)	75 g
Hydrastis canadensis (Goldenseal)	50 g
Echinacea purpurea (Purple Coneflower)	50 g
Ribes nigrum (Black currant)	50 g
Vaccinium macrocarpon (Cranberry)	50 g
Omega 3 (EPA 33% - DOCA 22%)	50 g
Vitamins	
Vitamin C	30.300 mg

Package : 1 kg with apple flavour  
Dosage : 1 measuring spoon (22 g) per day or as recommended  
Precaution : Do not give longer than 3 weeks.

### Properties

A number of plants such as **Echinacea** and **Hydrastis canadensis** are known for their beneficial influence on the immune system.

**Ribes nigrum** has a high level of vitamin C and a positive influence on the immune system and fatigue.

**Avena sativa** is a rich source of vitamin B, is nerve-strengthening and stimulates the appetite.

**Spirulina platensis** is rich in minerals, stimulates detoxification and the immune system.

**Vaccinium macrocarpon** has high anti-oxidative properties and has a positive influence on the immune system through the supply of minerals, vitamins C and A and carotene.

# Equi-SELES

Vitamin E and Selenium

## Composition (Quantity per kg)

Rolles oat, Carob, Soy meal extracted and toasted, Soy beans toasted

<b>Vitamins</b>	
Vitamin E (D- alpha-tocopherol)	25.000 mg
<b>Minerals</b>	
Selenium as selenomethionine (3b8.11)	10 mg

Package : 1 kg  
Dosage : 1 measuring spoon (60 g) per day or as recommended  
Precaution : No specific indications

## Properties

Tying-up of stiff muscles in horses often occurs after strenuous exertion. This obvious feeling of discomfort can be improved significantly by giving selenium and vitamin E. Both are important elements in the muscle metabolism.

**Vitamin E** fights free radicals thereby heading off oxidative damage, or oxidative stress, to cells.

It plays an important role as an antioxidant.

**Selenium** plays an essential part as a nutrient for animals and plays a major role in the protection of cells by destroying oxidizing substances.

# EQUI-SPERFOR PLUS

Helps to improve the performance of the Stallions.

## Composition(Quantity per 1.2 Kg)

Feeding stuff	Quantity (g/1.2kg)
Whey proteins	334
Tribulus terrestris (Devil's thorn)	300
Lepidium meyenii peruvianum (Maca,Peruvian ginseng)	100
Vaccinium macrocarpon (Cranberries)	60
Omega -3 fatty acids	100
<b>Amino acids</b>	
L-Arginin	2.5%
L-Lysin	2.5%
L-Methionin	2.5%
L-Acetyl carnitin	0.5%
L-Taurin	0.4%
L-Glutaminic acid	0.3%
L-Cystein	0.3%
L-Glycin	0.3%
<b>Vitamins</b>	
Vit A Retinol	15 000 000 IU
Vit. B1 Thiamin	8
Vit.B6 Pyridoxin	6
Vit B9 Folic acid	0.15
Vit B12 Cyanocobalamin	0.001
Vit.C Ascorbic acid	40
Vit.E d-alpha-tocopherol	40
Cholin	3
Inositol	3
<b>Trace elements mg/kg</b>	
Co Sulfate	16.6 mg
Cu chelate	83.3 mg
Fe chelate	416.6 mg
Mn chelate	416.6 mg
Selenium methionin	16.6 mg
Zn AA chelate 15%	375 mg

Appel flavor	30
Mg stearate	30

Packing : 1.2kg scoop (30g) with appelflavor.  
Dosage : 2 scoops a day during 6 weeks  
Precaution : None

## Properties

### EQUI SPERFOR PLUS

- Supplies more energy
- Better performance
- Helps with a rapid revalidation
- Increased resistance
- Improves motility





# Equi-STRESS

To use in case of stress factors

## Composition (Quantity per kg)

Feedingstuff	
Dextrose	
Passiflora incarnata (Passion flower)	180 g
Lepidium meyenii (Maca)	180 g
Eschscholzia californica (California poppy)	120 g
Schisandra chinensis (Five flavonberry)	120 g
Vitamins and pro-vitamins	
Vitamin B6	1.800 mg
Folic acid	1.500 mg
Amino acids	
L-tryptophan	70.000 mg

Package : 1 kg with apple flavour  
Dosage : 1 measuring spoon (25 g) per day or as recommended  
Precaution : No specific indications

## Properties

Quiet horses perform better, hurt themselves less and are more relaxed during transport and competition.

**Equi-Stress** contains important plants with relaxing properties:

**Passiflora incarnata**, **Eschscholzia californica**, have a calming effect.

**Lepidium meyenii** and **Schisandra** are plants containing substances that alleviate the effects of stress.

**L-Tryptophan** is an essential amino acid to the body. It is the precursor of Serotonin, the most important anti-stress hormone.





<b>Equi-TOTAL</b>	Additional minerals, vitamins and amino acids
-------------------	---

## Composition (Quantity per kg)

<b>Feedingstuff</b>	
Dextrose	
Equisetum arvense extr.	3 g
Spirulina	3 g
<b>Vitamins</b>	
Vitamin A (retinol)	500.000 IU
Vitamin D3 (cholecalciferol))	70.000 IU
Vitamin B1 (thiamin)	100 mg
Vitamin B2 (riboflavin)	150 mg
Vitamin PP (nicotinamid)	100 mg
Vitamin B5 (Ca-pantotenate)	1.000 mg
Vitamin B6 (pyridoxin HCl)	200 mg
Vitamin B9 (folic acid)	100 mg
Vitamin B12 (cyanocobalamin)	1 mg
Biotin	850 mg
Vitamin E (D-alpha-tocopherol)	3.090 mg
Vitamin K3 (menadion)	70 mg
Inositol	5.000 mg
L-carnitine	1.500 mg
L-aurine	5.000 mg
<b>Amino acids</b>	
L-leucine	2.500 mg
L-isoleucine	2.500 mg
L-valine	3.500 mg
L-tryptophan	5.000 mg

<b>Minerals</b>	
Co: Cobalt sulphate monohydrate	16,75 mg
Se: Natrium selenite	6,67 mg
Cu: Kopper chelate	50 mg
Zn: Zinc chelate	0,44 mg
Fe: Iron chelate	540 mg
Mn: Manganese chelate	420 mg

Package : 1 kg with apple flavour  
 Dosage : 1 measuring spoon (17 g) per day or as recommended  
 Precaution : No specific indication.

## Properties

**Equi-Total** contains all necessary vitamins / minerals / amino acids that are essential to the development of both young and fully-grown horses. It is clear that prolonged exertions result in an increased need for vitamins and minerals.

Minerals play an important part in the development and maintenance of the skeleton / muscle contractions / energy production / as an enzyme factor.

**Calcium** and **phosphorus** are both minerals that are related specifically to bone development.

**Magnesium** is essential to energy metabolism.

**Potassium** takes care of the maintenance of the degree of acidity in cells and the osmotic pressure.

**Iron** has a significant function in working horses through its relationship with hemoglobin, a complex protein which regulates oxygen transport.

**Manganese** supports cartilage development.

**Equisetum arvense** contains much organic silicon and is useful for strong bones. It supports the quality of the joint function.

**Equi-Total** contains amino acids including **lysine** and **methionine** which are often deficient in horse feed.

A lysine deficiency for instance results in decreased growth and development.

## Equi-VITAMINE E

Pure Vitamin E (500 mg/g), 700 IU/g

### Composition (Quantity per kg)

Feedingstuff	
Soya lecitin	
Maltodextrine	
Vitamins and pro-vitamins	
Vitamin E (D-alpha-tocopherol)	504.700 mg

Package : 300 g  
Dosage : 1 measuring spoon (10 g) per day or as recommended  
Precaution : No specific indications.

### Properties

**Vitamin E** is a generic term applied to a large number of compounds natural or synthetic. The most important is the natural, most active and best taken up by the body, namely **D-alpha-tocopherol**. The daily dosage of the pure form is 5 grams or 10 grams of **Equi-Vitamine E**.

# FERROTONIC HORSE

# Supply of Iron

## Composition (Quantity per kg)

Dextrose, Carobtree

<b>Vitamins</b>	
D-alfa tocoferol / (Vit E)	5.000 mg
Folic acid (Vit B9)	980 mg
Cyanocobalamin (Vit B12)	50 mg
Ascorbic acid (Vit C)	35.000 mg
<b>Minerals</b>	
Iron (Ironchelate) – E1	40.000 mg

Package : 2 kg Plastic container with scoop (25 g).

Dosage : 1 measure (25 g powder) a day

Precaution : None

Conservation : Roomtemperature (15°-25°)

**Iron supply**

# Hippospiros Liquid

## Composition (Quantity per kg)

Feedingstuff	
Terpineol	11.2 g
Grindélia(Wild Sunflower) tinct.	10.8 g
Eucalyptol oil	5.5 g
Niaouli oil	5.5 g
Rosmarinus officinalis oil (Rosemary)	5.4 g
Pinus sylvestris oil(Pine)	5.3 g

Package : Glass bottel 500 ml.

Dosage : 2 tablespoons daily during 8 days

Precaution : none

Conservation : Room temperature , keep out of reach of children.

**For sensitive airways  
For better breathing**



# Hippo-11 ®Pellets

## For sensible airways

### Composition (quantity per kg)

Lucerne, Carob,Wheat,Maize .

Ingredients	
Phytotherapy: Majoran,Milgewan,Thym,Cinnamomum,Horsetail,Rosemary,Fennel,Clove but,	
Watercress ,Broccoli ,Anise	
Oligo minerals	
Zinc (Zn E6)	540 mg
Copper (Cu E4)	250 mg
Cobalt (Co E3)	8 mg
Selenium (Se E8)	4 mg
Iodine (I E2)	22 mg

Package : 600 g plastic container with scoop 25 g.

Dosage : 1 – 2 scoops a day during 12 days .

Precaution : None

Conservation: Room temperature 25°C .

**Rich in Methylecystein ( Watercress) Mucolitic.  
For a better breathing and oxygen uptake .**

# Hypaminon Active

Hemoglobin-protein /Iron supply

## Samenstelling / Composition

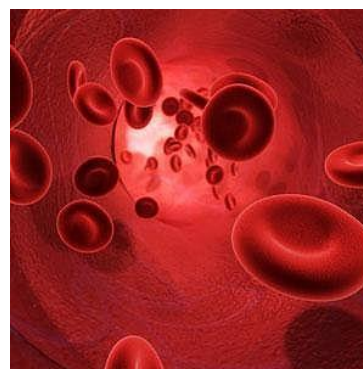
Hemoglobine-protein, Ribose

Analysis			
Raw Proteine		91,5 %	
Raw cell substance		0,5 %	
Raw fat		0,6 %	
Ash		2,5 %	
Sodium		0,9 %	
Iron		0,23 %	
L-Alanine	8,1 %	L-Arginin	3,3 %
L-Aspargin Acide	9,6 %	L-Cysteïni	0,4 %
L-Glutaminic acid	7,3 %	L-Glycin	3,9 %
L-Histidin	6,0 %	L-Isoleucin	0,2 %
L-Leucin	12,2 %	L-Lysin	8,7 %
L-Methionin	1,2 %	L-Phenylanin	7,2 %
L-Prolin	3,2 %	L-Serin	4,4 %
L-Thronin	4,2 %	L-Tyrosin	2,2 %
L-Valin	8,2 %	L-Carnitin	1,6 %

Package : Plastic container 500 g.

Dosage: 2.5 g per 100 kg ,1 scoop (12.5 g) for 500 kg

Conservation: Roomtemperature



# Placentarom

## Composition (Quantity per kg)

<b>Essential oils</b>	
Salvia sclarea	1 g
Salvia officinalis	2 g
Artemisia absinthium	3 g
Foeniculum vulgare	4 g
Ocimum basilicum	4 g
Melaleuca viridiflora	8 g
<b>Castor oil</b>	<b>50 g</b>
<b>Mother tinctures</b>	
Artemisia vulgaris	160 g
Hydrastis canadensis	160 g
Calendula officinalis	120 g
Magnesium chlorid	25 g

Package : Plastic bottle 100 ml.  
Dosage : Mares 20 ml per day during 5 days  
Or 1 x 100 ml in Situ into matrix post partum.

Precaution : Not to use during pregnancy.

Conservation : room temperature.

**Helps the natural resistance post-partum**





# Pulvirex

Essential Oils

## Composition (Quantity per kg)

Feedingstuff	
Ravensare aromatica	39,6 g
Eucalyptus radiate	40 g
Hyssopus officinalis var decumbens	20,8 g
Origanum majorana	29,6 g
Melaleuca viridiflora	29,8 g
Eucalyptus dives	19,6 g
Tannacetum annuum	4,8 g
Salvia officinalis	10,2 g
Vitis vinifera semen oleum	805,6 g

Package: Box of 20 syringes of 10ml  
Dosage: - horses < 100kg: daily 5ml or twice a day 2,5ml, in a bowl of hot water so vapours can be inhaled  
- > 100kg: double the daily dose  
1 Syringe a day ,during 6 days in feed or mouth.  
Precautions: None  
Preservation: Keep in a cool and dark place.

## Properties

The essential oils in **Pulvirex 10ml** have broncho dilatorily, mucolytic and expectorial properties for an optimal breathing.



# EQUI-SUPPORT



## Supporting the Equine Veterinary Doctor

**Katilyne Ghijssels, DVM**

International Equine Product  
Specialist

Mobile: +32 (0)490 119 153

[info@equi-support.com](mailto:info@equi-support.com)

**webshop:**

[www.orthopaedics.be](http://www.orthopaedics.be)



**ORTHOPAEDICS.BE**



# Finding a Solution for Every Equine Vet...

## Equine regenerative therapy



**E-pet**  
**(PRP)**

## X-ray and ultrasound solutions



**SonoScape**

**FUJIFILM**



## Rehabilitation



**EQUITAPE**

## Wide range of consumables



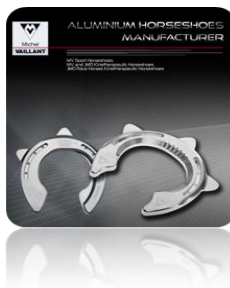
## Hyaluronic acid



## Equipharma food supplements



## Horseshoes JMD



## Refurbished endoscopes



## Mesotherapy kits

